



made for business

PALETTE & PALETTE XL

Vertical & Roller Blind Fabric Specification

PALETTE
FIRE RETARDANT
ANTI-MILDEW COATING

PALETTE XL
WIDE WIDTH
FIRE RETARDANT
ANTI-MICROBIAL



eclipse®

PALETTE & PALETTE XL

Vertical & Roller Blind Fabric Specification

KEY FEATURES:



- Fabric composition:** 100% Polyester
- Fire retardancy:** Conforms to; EN 13773 : 2003 Class 1; BS5867 - 2, Type B : 2008 for fire retardancy when tested in accordance with BS5438 : 1989
- Shading:** Standard - Suitable for computer environments
- Moisture resistance:** Acticide Coated - Recommended for moist conditions
- Antimicrobial:** Biomaster zinc biocide tested to ISO 22196; 2011 (on XL fabrics only)

STANDARD SPECIFICATIONS:

- Colour range:** 53 (20 in XL)
- Louvre widths available:** 89mm (3^{1/2}"); 127mm (5")
- Roller fabric width:** 200cm: nominal (78.7")
- XL Roller fabric width:** 240cm nominal (94.5")
- Typical fabric weight:** 265gsm - (+/-10)
- Fabric thickness:** 0.35mm - nominal
- Colourfast:** Conforms to; BS5867 - 1 : 2004 for light fastness to Grade 6 minimum when tested in accordance with ISO 105 - B02 : 1999
- Care instructions:** Wipe with damp sponge; Do not wash; Do not tumble dry; Do not Dry Clean: Do not iron



| Colour | %Heat | | %Light | | S-C | Colour | %Heat | | %Light | | S-C |
|---------------|-------|----|--------|----|------|-------------|-------|----|--------|----|------|
| | T | R | T | R | | | T | R | T | R | |
| Anthracite* | 0 | 11 | 0 | 11 | 0.79 | Indigo | 0 | 5 | 0 | 6 | 0.82 |
| Atlantic Blue | 7 | 29 | 0 | 9 | 0.63 | Iris* | 1 | 15 | 0 | 9 | 0.74 |
| Beige | 17 | 62 | 15 | 70 | 0.35 | Iron* | 10 | 51 | 7 | 54 | 0.44 |
| Biscotti | 10 | 53 | 8 | 56 | 0.42 | Lavender | 17 | 57 | 8 | 47 | 0.40 |
| Black* | 0 | 5 | 0 | 6 | 0.83 | Lime | 9 | 45 | 3 | 42 | 0.49 |
| Blue Haze | 13 | 48 | 3 | 30 | 0.47 | Magnolia | 13 | 59 | 10 | 63 | 0.37 |
| Bright White* | 22 | 70 | 21 | 79 | 0.29 | Mango | 16 | 47 | 4 | 24 | 0.48 |
| Calico* | 20 | 67 | 19 | 75 | 0.31 | Marina | 10 | 39 | 1 | 15 | 0.54 |
| Charcoal* | 0 | 12 | 0 | 12 | 0.77 | Mulberry | 0 | 9 | 0 | 8 | 0.79 |
| Concrete* | 1 | 18 | 0 | 18 | 0.71 | Ocean | 9 | 34 | 0 | 12 | 0.58 |
| Copper | 9 | 35 | 0 | 11 | 0.58 | Pearl* | 19 | 64 | 16 | 62 | 0.34 |
| Cream* | 19 | 65 | 17 | 73 | 0.33 | Plum | 1 | 19 | 0 | 11 | 0.71 |
| Dark Blue* | 0 | 5 | 0 | 6 | 0.82 | Redcurrant* | 13 | 45 | 1 | 16 | 0.49 |
| Denim | 4 | 30 | 0 | 20 | 0.61 | Saffron | 14 | 56 | 8 | 56 | 0.40 |
| Dusky Pink | 14 | 51 | 4 | 36 | 0.45 | Sand* | 7 | 42 | 3 | 43 | 0.51 |
| Espresso | 0 | 6 | 0 | 6 | 0.82 | Scarlet | 13 | 40 | 2 | 15 | 0.54 |
| Fog | 12 | 45 | 2 | 27 | 0.49 | Sky | 16 | 60 | 10 | 57 | 0.37 |
| Forest Green* | 0 | 10 | 0 | 7 | 0.78 | Smokey Blue | 14 | 58 | 10 | 60 | 0.38 |
| Fresh Apple | 13 | 59 | 10 | 63 | 0.37 | Spring | 10 | 50 | 8 | 54 | 0.45 |
| Fudge | 1 | 16 | 0 | 15 | 0.73 | Stone Grey* | 10 | 51 | 7 | 54 | 0.44 |
| Glacier Blue* | 7 | 29 | 0 | 9 | 0.66 | Sunshine* | 18 | 58 | 17 | 67 | 0.39 |
| Grape | 1 | 19 | 0 | 11 | 0.71 | Taupe | 11 | 46 | 2 | 27 | 0.48 |
| Green | 7 | 41 | 3 | 41 | 0.52 | Teal | 10 | 46 | 2 | 34 | 0.48 |
| Grey* | 12 | 53 | 3 | 39 | 0.43 | Tidal | 13 | 50 | 4 | 36 | 0.45 |
| Ice Blue | 20 | 68 | 19 | 77 | 0.30 | Vanilla* | 15 | 67 | 12 | 70 | 0.31 |
| Ice Pink | 21 | 69 | 20 | 78 | 0.30 | White* | 21 | 69 | 20 | 78 | 0.30 |
| Ice Purple | 20 | 68 | 19 | 77 | 0.30 | | | | | | |

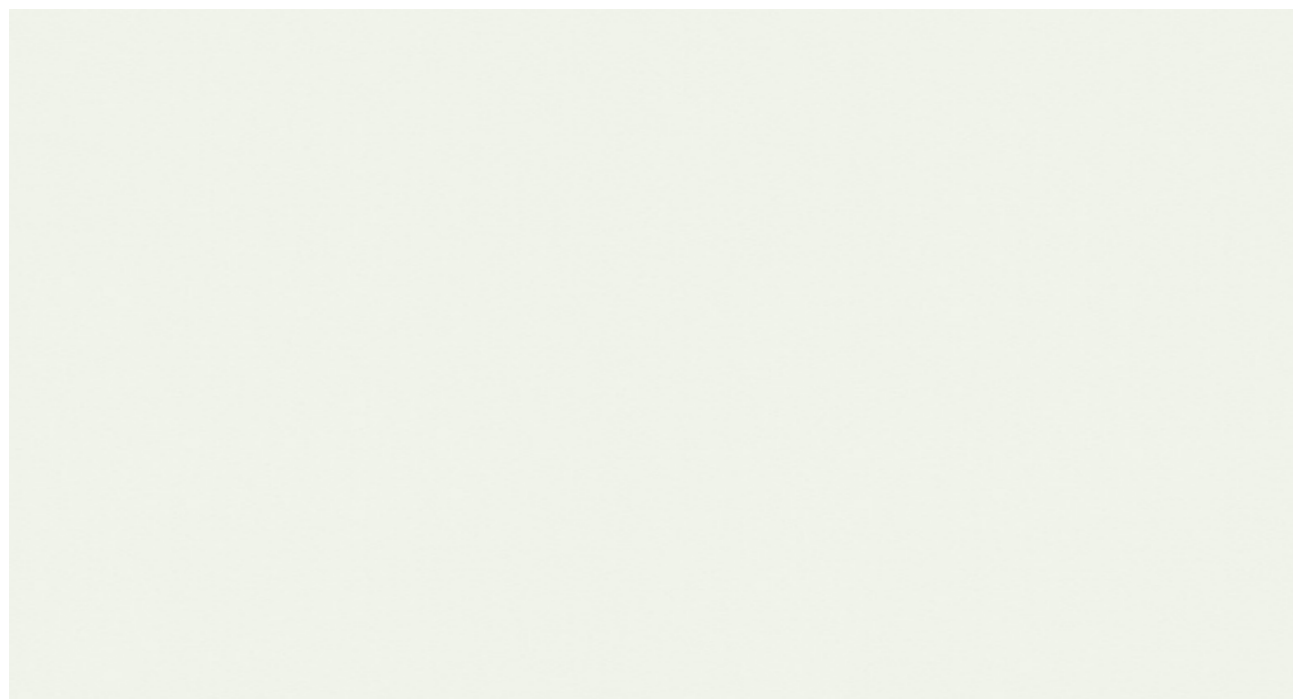
This data is based on: Tests conducted using double glazed 6mm float glass with 12mm air space. Blinds are fully closed.

Shading co-efficients are calculated for radiation at normal incidence. Standard U value is 2.75 W/M2K = 0.49Btu/ft2hx°F.

Important: Performance data has been compiled with great care using the latest techniques. However it is advisable to check actual suitability of fabrics for a particular application before use.

In line with Eclipse's commitment to product development, specifications may be subject to change without notice.

T = Transmitted : R = Reflected : S-C = Shading Co-efficient. Shading Co-efficients are expressed as a decimal between 0 and 1. The lower the figure, the higher the shading efficiency of the blind. * Available as Palette XL



Bright White*



Sand*



Taupe



Fudge



Espresso



Grape



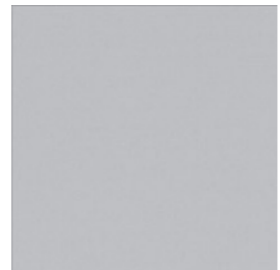
Plum



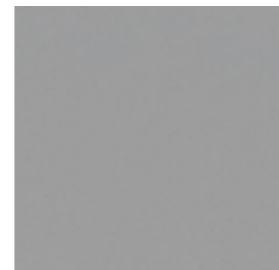
Iris*



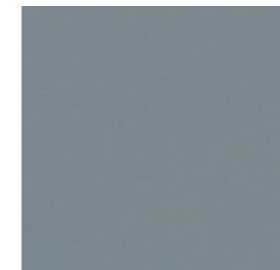
Mulberry



Iron*



Grey*



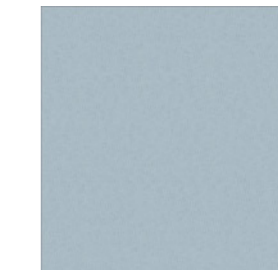
Fog



Tidal



Sky



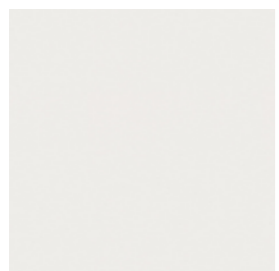
Smokey Blue



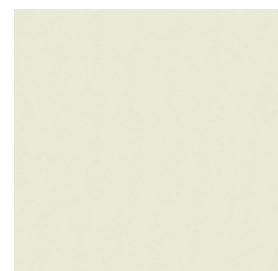
Blue Haze



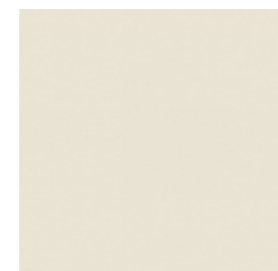
Denim



White*



Calico*



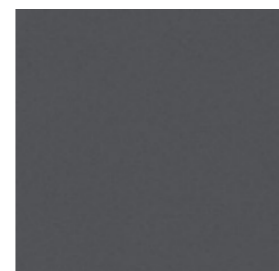
Cream*



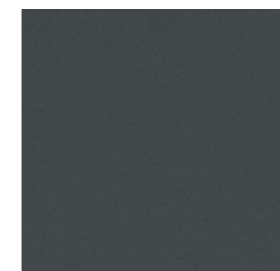
Magnolia



Concrete*



Charcoal*



Anthracite*



Black*



Marina



Glacier Blue*



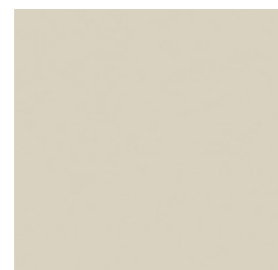
Atlantic Blue



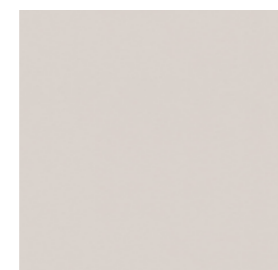
Dark Blue*



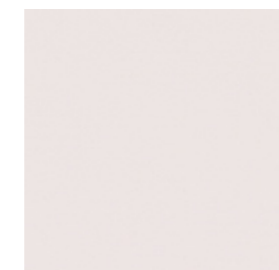
Beige



Vanilla*



Pearl*



Ice Pink



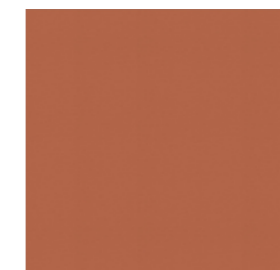
Sunshine*



Mango



Saffron



Copper



Indigo



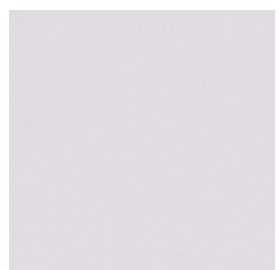
Ocean



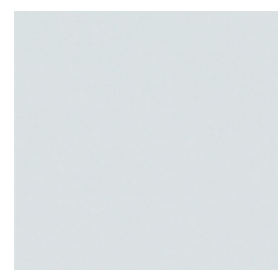
Teal



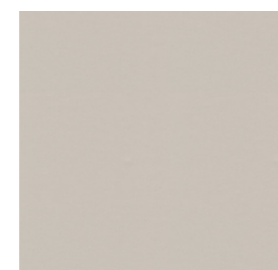
Spring



Ice Purple



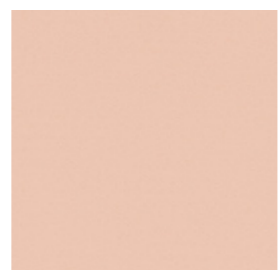
Ice Blue



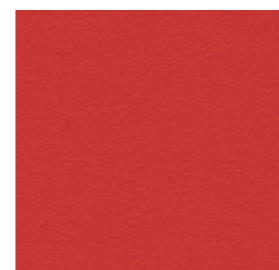
Stone Grey*



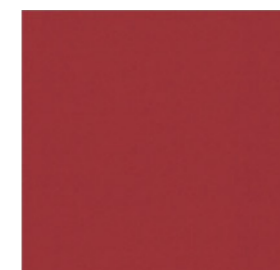
Biscotti



Dusky Pink



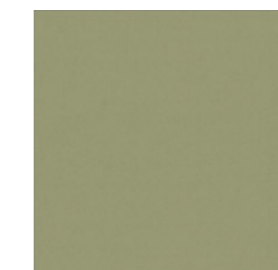
Scarlet



Redcurrant*



Lavender



Green



Fresh Apple



Lime



Forest Green*

* Available as Palette XL