

UNIVIEW®

3000
3100
3200

3%

Uniview® 3000, 3100 and 3200 Superfine fabrics are designed to satisfy the highest technical and aesthetic standards as demanded by today's residential, commercial, educational and healthcare applications.

Providing the best in transparent solar shading solutions, Uniview® fabrics are durable, washable and will not fray. Achieving the BS5867: 2008 Part 2 Type B standard for flammability standard, Uniview is also non-toxic, UV and bacteria resistant.

SOLAR AND OPTICAL PROPERTIES

SOLAR GAIN

The amount of heat increase resulting from solar energy entering a room. It is the total of three separate parts - the amount of energy transmitted directly into the room, the energy which is absorbed by the blind and a proportion of the energy which is absorbed by the window.

SHADING CO-EFFICIENT

The solar heat gain with the blind at the window divided by the solar heat gain with no blind at the window. The lower the shading co-efficient, therefore, the higher the efficiency of the fabric.

UNIVIEW® SPECIFICATIONS						
Series	3000		3100		3200 Superfine	
Colour Range	8		6		6	
Roller Roll Length	29-31m for 1.83m & 2.5m widths	20-22m for 3m widths	29-31m for 1.83m & 2.5m widths	20-22m for 3m widths	29-31m for 1.83m & 2.5m widths	20-22m for 3m widths
Roller Roll Width	1.83m / 2.5m / 3m		1.83m / 2.5m / 3m		1.83m / 2.5m / 3m	
Vertical Roll Width	N/A		N/A		89mm	
Fabric Composition	30% Polyester 70% Vinyl on Polyester		25% Polyester 75% Vinyl on Polyester		25% Polyester, 75% Vinyl on Polyester	
Mesh/cm	19 x 19		20 x 19		26 x 22	
Mesh Weight	410g/m²		510g/m²		325g/m²	
Yarn Diameter	0.33mm x 0.33mm		0.33mm x 0.33mm		0.24mm x 0.26mm	
Thickness	0.53mm		0.57mm		0.43mm	
Breaking Strength	330 x 330lbs (ASTM D5035)		330 x 330lbs (ASTM D5035)		1350 x 1100lbs (ASTM D5035)	
Abrasion Resistance	>1000 (ASTM D4966)		>1000 (ASTM D4966)		N/A	
Openness Factor	3%		3%		3%	
Care & Washing	Do not soak. Clean by gently wiping with a sponge.		Do not soak. Clean by gently wiping with a sponge.		Do not soak. Clean by gently wiping with a sponge.	
Colour Fastness	BS EN ISO 105 - B02:1999 (colour fastness to artificial light Std 5)		BS EN ISO 105 - B02:1999 (colour fastness to artificial light Std 5)		BS EN ISO 105 - B02:1999 (colour fastness to artificial light Std 6)	
Flammability Standards	BS 5867 (1980 Part 2, Type B), B1 DIN-4102		BS 5867 (1980 Part 2, Type B), B1 DIN-4102		BS5867 (2008 Part 2, Type B), B1 DIN-4102	
Anti-Fungal	ASTM G21		ASTM G21		ASTM G21	
Property	Dim Out		Dim Out		Dim Out	
Samples	Fabric samples available on request		Fabric samples available on request		Fabric samples available on request	

UNIVIEW® SOLAR AND OPTICAL PERFORMANCE																		
	Solar			Visible			UV		QRF	CF	GTOT				SC			
	RS %	TS %	AS %	RV %	TV %	AV %	Block %	SG			DG	TG	DGLE	SG	DG	TG	DGLE	
Uniview® 3000																		
Crystal	70	18	12	81	16	3	95	8	6+	0.32	0.34	0.35	0.35	0.37	0.40	0.40	0.40	
Alabaster	67	15	18	75	11	13	95	7	6+	0.33	0.36	0.36	0.36	0.38	0.41	0.41	0.42	
Beige	56	20	24	63	16	20	92	6	6+	0.40	0.41	0.40	0.42	0.46	0.47	0.46	0.48	
Cool Grey	53	11	35	59	8	33	95	6	6+	0.39	0.41	0.40	0.42	0.45	0.47	0.46	0.48	
Soft Steel	39	9	51	43	6	51	95	4	6+	0.46	0.47	0.45	0.49	0.53	0.54	0.52	0.56	
Pearl Grey	48	11	41	54	8	37	95	5	6+	0.42	0.44	0.42	0.45	0.48	0.50	0.48	0.51	
Stellar	10	7	83	11	6	83	94	1	6+	0.61	0.60	0.55	0.62	0.70	0.69	0.64	0.71	
Jet	3	6	90	4	6	90	94	0	6+	0.64	0.63	0.58	0.65	0.74	0.73	0.66	0.75	
Uniview® 3100																		
Winter White	70	19	11	81	17	2	96	8	6+	0.32	0.34	0.35	0.35	0.37	0.40	0.40	0.40	
Canola	67	16	18	69	12	18	96	7	6+	0.33	0.36	0.36	0.36	0.38	0.41	0.41	0.42	
Shadow	56	12	33	64	9	27	96	6	6+	0.38	0.40	0.39	0.41	0.44	0.46	0.45	0.47	
Storm	53	8	39	62	6	32	97	6	6+	0.39	0.41	0.40	0.42	0.45	0.47	0.46	0.49	
Nutmeg	47	7	45	55	6	39	95	5	6+	0.42	0.44	0.42	0.45	0.48	0.50	0.48	0.52	
Twilight	47	7	46	56	6	38	95	5	6+	0.41	0.44	0.42	0.45	0.48	0.50	0.48	0.52	
Uniview® 3200 Superfine																		
Prima	68	18	14	77	15	8	95	7	8	0.33	0.35	0.35	0.36	0.38	0.40	0.41	0.41	
Dune	58	20	22	66	16	19	95	6	8	0.38	0.40	0.39	0.41	0.44	0.46	0.45	0.47	
Spark	51	15	35	56	11	33	95	5	8	0.41	0.43	0.41	0.44	0.48	0.49	0.48	0.50	
Urbane	43	13	44	49	10	42	95	5	8	0.45	0.46	0.44	0.47	0.52	0.53	0.51	0.54	
Astral	39	13	49	42	9	50	93	4	8	0.47	0.48	0.46	0.49	0.54	0.55	0.52	0.57	
Spectre	9	9	82	10	8	82	92	1	8	0.61	0.61	0.56	0.62	0.71	0.70	0.64	0.72	

GLOSSARY

T: % Transmittance.

R: % Reflectiveness.

A: % Absorption.

UV Block: Percentage of UV

light blocked by the fabric.

QRF: Quick Reference Factor.

CF: Colour Fastness.

gtot: The solar factor entering

a building through a window and

the shading device combined.

SC: Shading Co-efficient.

SG: Single Glazing.

DG: Double Glazing.

TG: Triple Glazing.

DGLE: Double Glazing Low Emissivity.

UNIVIEW®

3000

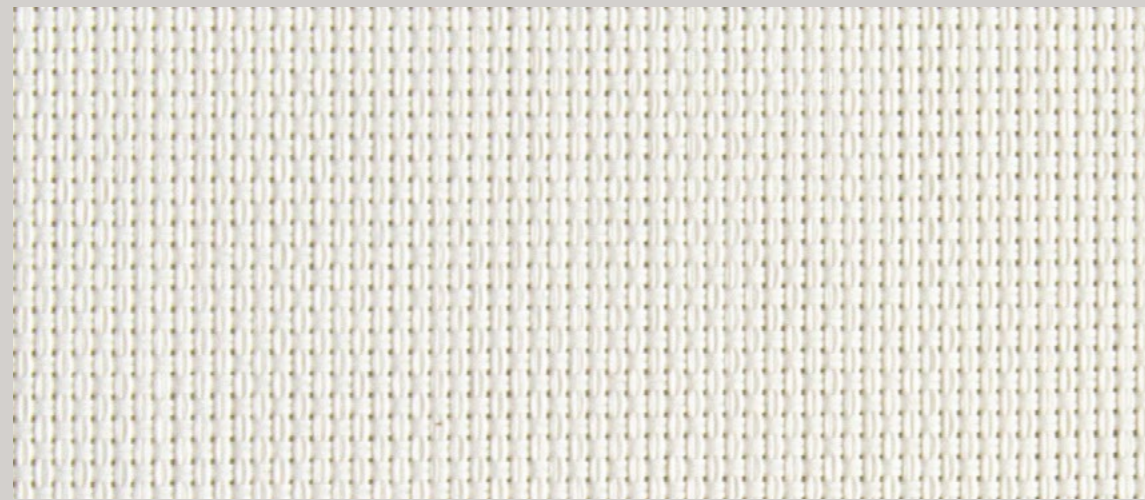
3100

3200

3%

UNIVIEW®

UNIVIEW® 3000



CRYSTAL

RPU663 - 1.83m
RPU630 - 2.50m
RPU680 - 3.00m



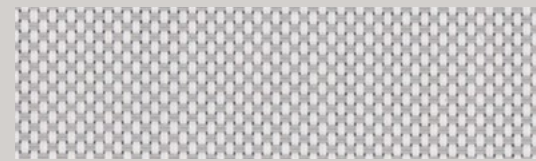
ALABASTER

RPU716 - 1.83m
RPU717 - 2.50m
RPU718 - 3.00m



BEIGE

RPU664 - 1.83m
RPU631 - 2.50m
RPU681 - 3.00m



COOL GREY

RPU719 - 1.83m
RPU720 - 2.50m
RPU721 - 3.00m



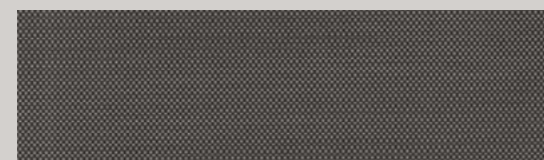
SOFT STEEL

RPU666 - 1.83m
RPU633 - 2.50m
RPU683 - 3.00m



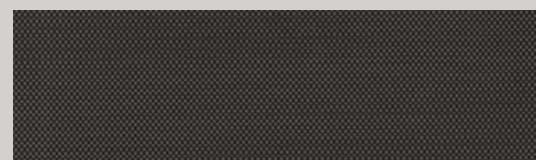
PEARL GREY

RPU665 - 1.83m
RPU632 - 2.50m
RPU682 - 3.00m



STELLAR

RPU668 - 1.83m
RPU635 - 2.50m
RPU685 - 3.00m



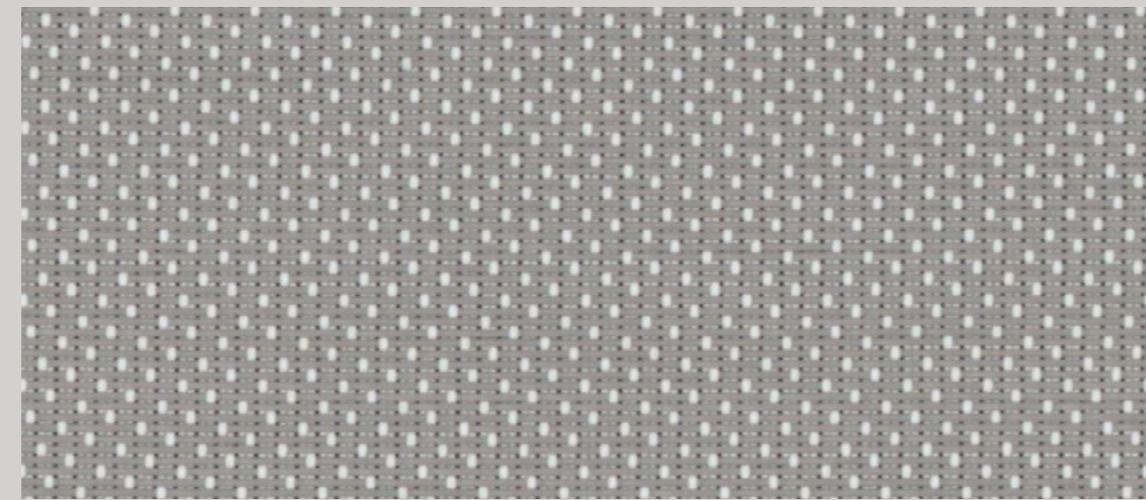
JET

RPU669 - 1.83m
RPU636 - 2.50m
RPU686 - 3.00m

UNIVIEW® 3000

Also available in 1%
(Uniview 1300)

UNIVIEW® 3100



SHADOW

RPU648 - 1.83m
RPU659 - 2.50m
RPU693 - 3.00m



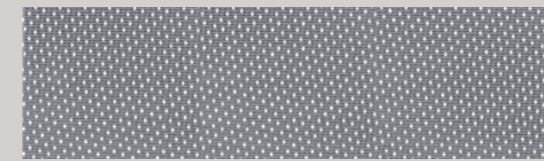
WINTER WHITE

RPU646 - 1.83m
RPU657 - 2.50m
RPU695 - 3.00m



CANOLA

RPU746 - 1.83m
RPU747 - 2.50m
RPU748 - 3.00m



STORM

RPU650 - 1.83m
RPU661 - 2.50m
RPU692 - 3.00m



NUTMEG

RPU649 - 1.83m
RPU660 - 2.50m
RPU696 - 3.00m



TWILIGHT

RPU651 - 1.83m
RPU662 - 2.50m
RPU694 - 3.00m

UNIVIEW® 3100

Due to the nature of the weave, the exterior of all Uniview® 3100 are white.

Also available in 1% (Uniview 1100)

UNIVIEW® 3200 SUPERFINE



PRIMA

LPU637 - 89mm
RPU698 - 1.83m
RPU704 - 2.50m
RPU710 - 3.00m



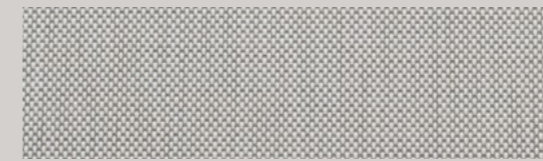
DUNE

LPU638 - 89mm
RPU699 - 1.83m
RPU705 - 2.50m
RPU711 - 3.00m



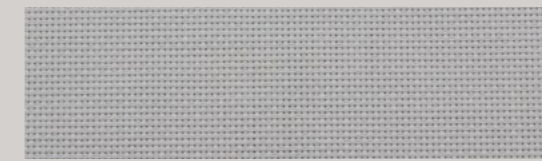
SPARK

LPU639 - 89mm
RPU700 - 1.83m
RPU706 - 2.50m
RPU712 - 3.00m



URBANE

LPU640 - 89mm
RPU701 - 1.83m
RPU707 - 2.50m
RPU713 - 3.00m



ASTRAL

LPU642 - 89mm
RPU703 - 1.83m
RPU709 - 2.50m
RPU715 - 3.00m



SPECTRE

LPU641 - 89mm
RPU702 - 1.83m
RPU708 - 2.50m
RPU714 - 3.00m

UNIVIEW®

3000
3100
3200

3%

